

# Wombat: An experimental Wi-Fi Tracking system

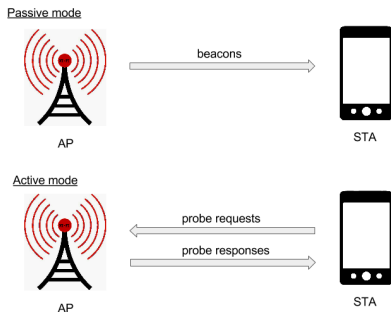
Célestin Matte, Mathieu Cunche

Univ Lyon, INSA Lyon, Inria, CITI, France, Région Rhône-Alpes funding

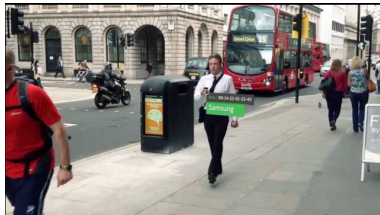
APVP 2017, Autrans

# Introduction - Wi-Fi service discovery

- Wi-Fi infrastructure mode is asymmetric: access point (AP, “server”) and stations (STA) (“clients”)
- Stations discover APs by either:
  - listening for incoming beacon frames (passive mode),
  - sending probe request frames (active mode).
    - Less energy-consuming
    - Containing a unique identifier: the MAC address



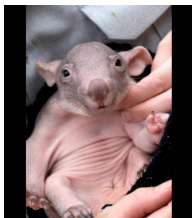
# Introduction - Physical tracking



- What: getting the knowledge of a device's presence over time
- Who: businesses, intelligence services, nasty neighbours, employers...
  - Many retail tracking start-ups: Nomi, Euclid, Purple WiFi...
  - Locations: London, Oslo, Niort, Maryland, Lyon...
- Privacy issue: no consent nor awareness

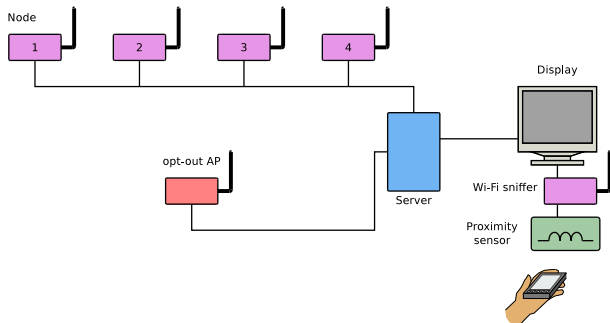


# Introducing Wombat

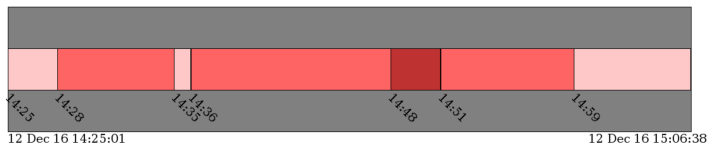


- Wi-Fi Tracking system
- Platform to experiment various privacy-related features

# Architecture



# You got tracked - user interface



legend:



MAC address: 34:23:ba:df:90:ce

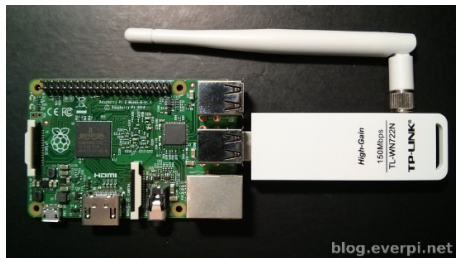
Vendor / Manufacturer: Samsung Electro Mechanics co.,LTD.

total number of frames: 2247

visit duration: 0h 41min 37sec

SSIDs: IKEA WiFi, WiFi-Cite-Espace, WiFi Hotel Les Skieurs, hotspot-cite-sciences, grenoble

- Raspberry pi + TP-Link Wi-Fi dongle



- Autonomous wired local network
- Crash-tolerant read-only system

# Installations for popularization

- Demos
- X:enius TV show @ Montbonnot
- *Cité des Sciences de de l'Industrie*, Terra Data exhibition, Paris



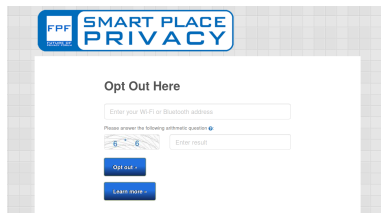
- CNIL (soon)



- Data is erased after a fixed time (i.e. 15 minutes)
- Opt-out mechanism

# Privacy-enhancing feature: opt-out mechanism

- Opt-out: exiting the system
- Legislation imposes the possibility to opt out (FTC, CNIL)
- Current mechanisms are hardly useable



The screenshot shows a web interface for 'SMART PLACE PRIVACY' with the FPF logo. The main heading is 'Opt Out Here'. Below this is a text input field labeled 'Enter your Wi-Fi or Bluetooth address'. Underneath is a section titled 'Please answer the following arithmetic question' with a small image of a calculator and a text input field labeled 'Enter result'. At the bottom are two buttons: 'Opt out' and 'Learn more'.

- Wi-Fi-based mechanism: using a fake AP using a recognizable SSID (“Pas de suivi wi-fi. Do not track”)
  - No software or hardware modification
  - Simple to use
  - Device will remember the association → user action needed only once
  - No memory of blacklisted devices
  - Global if standardized

- Wombat: tracking system testbed
- What next? Test privacy-preserving concepts
- Contact us if you want to make experiments or demos